

BGC2.0 instructions

1. Install JAVA Virtual machine

http://java.com/zh_CN/download/installed.jsp

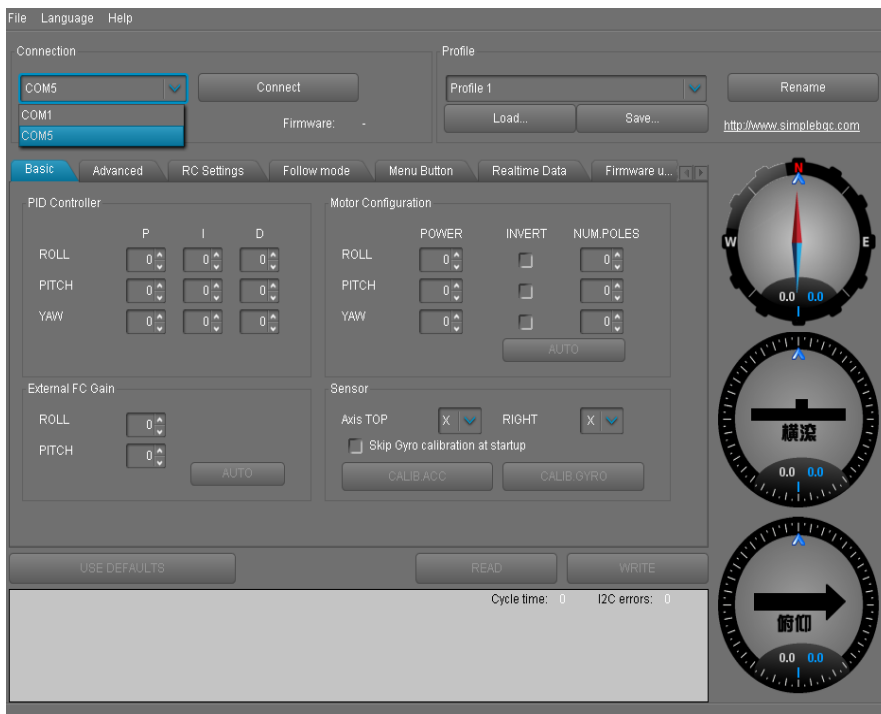
2. install CP2102 USB driver for xp/win7

3. connect from the gimbal controller to computer by mini usb

the mini usb like it



4 select the right com ports



5 if you order my TH go gimbal ,you can do follwe the (TH go3.exe)
to Restore factory settings

6 maintain the level of setting

http://v.youku.com/v_show/id_XNjU30TkWmZy4.html